

Sparkles Cutest Crew Sneak Peek Secret Slider Birthday Card



Link to the Original Project Blog Post:

<https://wp.me/p5snyt-GIt>

Link to Video on How to Make this Card:

<https://youtube.com/live/hL6ocDU6r8M>

Card Stock Cuts for this Project:

Lemon Lolly Cardstock: 4 1/4" x 5 1/2" (card base); 3 3/4" x 4 1/4" (slider, scored at 3/8" on the short side); Next-to-Largest Stylish Shapes circle die cut (on front of card)

Balmy Blue Cardstock: 5 1/4" x 8 1/2" (card - scored at 2 3/4" and 6 3/4")

Bubble Bath Cardstock: Cutest Crew die cut butterflies on front

Basic White Cardstock: Stamped and die cut Cutest Crew birds; 3 1/4" x 4 1/8" (inner sentiment panel on slider)

Splash of Sparkles Specialty DSP: 2 5/8" x 5 1/8" (front panel); Second-from-Largest Stylish Shapes circle die cut (on front of card); Stylish Shapes banner die cut (x2 - behind circles on front); 2 5/8" x 5 1/8" (inside large panel); 1 5/8" x 5 1/8" (front small panel); 2 1/4" x 6" (envelope flap)



Instructions for this Project:

1. Score the 5 1/4" x 8 1/2" piece of Balmy Blue cardstock at 2 3/4" and 6 3/4".
2. Fold score lines in - like a gate card.
3. Use Liquid Glue to adhere the two 2 5/8" x 5 1/8" panels of **Splash of Sparkles Specialty DSP** to the left panel - one on the front and the other on the inside of the panel.
4. Use Liquid Glue to adhere the 1 5/8" x 5 1/8" panel of **Splash of Sparkles Specialty DSP** to the front of the right hand panel.
5. Score the 3 3/4" x 4 1/4" piece of Lemon Lolly cardstock at 3/8" on the short side.
6. On the 3 1/4" x 4 1/8" piece of Basic White cardstock stamp the **Cutest Crew** sentiment and the flowers image in Tuxedo Black Memento Ink.
7. Color the foliage image with the Light Lost Lagoon, Bubble Bath, Pretty in Pink and Lemon Lolly Stampin' Blends.
8. In the corners stamp the bird tracks image a few times in Tuxedo Black.
9. Use Liquid Glue to adhere the panel to the Lemon Lolly slider.



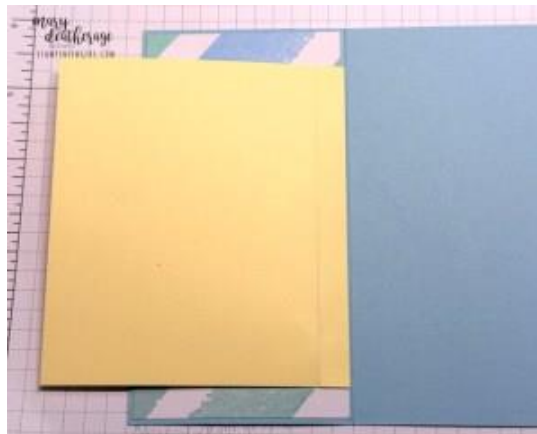
10. Lay a strip of **Tear & Tape Adhesive** on the 3/8" section on the left side of the slider and put the slider in place inside the card. Note: tuck the left edge of the slider right up to (but not over!) the left score line of the card base.



11. Remove the cover off the **Tear & Tape** and lay the left front panel down - to adhere it to the **Tear & Tape**.



12. When you open up the card base it'll look like this.



13. Place **Tear & Tape** on the top edges of the inside of the opposite short panel.
14. Fold the slider back down (so the sentiment side was up) and partially close the left side of the card base - then close the right panel - "capturing" the slider.





15. Use Liquid Glue on the back of the card to to adhere it to the 4 1/4" x 5 1/2" piece of Lemon Lolly cardstock.
16. Use the large banner die in the **Stylish Shapes** die set to cut out two banners from a piece of Bubble Bath **Splash of Sparkles Specialty DSP**.
17. Use Liquid Glue to adhere them to the card front.
18. Use the next-to-largest Stylish Shapes circle to cut out a Lemon Lolly cardstock circle.
19. Use the next smaller die to cut out a light Shaded Spruce circle from the **Splash of Sparkles Specialty DSP**.
20. Use Stampin' Dimensionals to adhere the small die cut circle onto the larger Lemon Lolly circle.
21. Use Liquid Glue to adhere the whole thing to the card front - centered on the closed card - making it offset from the banners.
22. On a piece of Basic White cardstock, stamp the **Cutest Crew** birds in Tuxedo Black Memento Ink.
23. Color them with the Light Lost Lagoon, Bubble Bath, Pretty in Pink, Timid Tiger and Lemon Lolly Stampin' Blends.
24. Use the coordinating die from the set to cut out the birds.
25. On a piece of Timid Tiger **Splash of Sparkles Specialty DSP** stamp the **Cutest Crew** sentiment in Tuxedo Black Memento Ink,
26. Use a Stylish Shapes banner die to cut out the sentiment.



27. Use Stampin' Dimensionals to adhere the sentiment - and then the die cut birds.
28. Use the die in the set to cut out three Bubble Bath butterflies and adhere them with Liquid Glue.
29. Use the die in the set to cut out Basic White flowers and adhere five of them to the smaller front panel with Liquid Glue.
30. Stamp the **Cutest Crew** bird tracks in Tuxedo Black Memento Ink on the front of the Basic White Medium Envelope.
31. Add a thin line of Liquid Glue around the edges of the envelope flap.
32. Lay the 2 1/4" x 6" piece of **Splash of Sparkles Specialty DSP** to the flap and rub it lightly to ensure it's stuck down.
33. Use Paper Snips to trim off the excess paper.
34. DONE!

Please click on the links to the right to see and purchase the available item(s) in my Online Store:

You'll also need the Cutest Crew stamp set when it's available

Stylish Shapes Dies [159183] - Price: \$30.00 - <http://msb.im/2Z5Q>

Splash Of Sparkles 12" X 12" (30.5 X 30.5 Cm) Specialty Designer Series Paper [167200] - Price: \$16.50 - <http://msb.im/2Z5R>

Lemon Lolly 8-1/2" X 11" Cardstock [161720] - Price: \$14.00 - <http://msb.im/2Z5S>

Balmy Blue 8-1/2" X 11" Cardstock [146982] - Price: \$14.00 - <http://msb.im/2Z5T>

Basic White 8-1/2" X 11" Cardstock [166780] - Price: \$14.00 - <http://msb.im/2Z5U>

Bubble Bath 8-1/2" X 11" Cardstock [161718] - Price: \$14.00 - <http://msb.im/2Z5V>

Tuxedo Black Memento Ink Pad [132708] - Price: \$8.00 - <http://msb.im/2Z5W>

Lemon Lolly Stampin' Blends Combo Pack [161673] - Price: \$11.00 - <http://msb.im/2Z5X>

Timid Tiger Stampin' Blends Combo Pack [165291] - Price: \$11.00 - <http://msb.im/2Z5Y>

Lost Lagoon Stampin' Blends Combo Pack [161680] - Price: \$11.00 - <http://msb.im/2Z5Z>

Bubble Bath Stampin' Blends Combo Pack [161675] - Price: \$11.00 - <http://msb.im/2Z5a>

Pretty In Pink Stampin' Blends Combo Pack [163824] - Price: \$11.00 - <http://msb.im/2Z5b>

Basic White Medium Envelopes [159236] - Price: \$11.00 - <http://msb.im/2Z5c>

Multipurpose Liquid Glue [110755] - Price: \$6.00 - <http://msb.im/2Z5d>

Stampin' Dimensionals [104430] - Price: \$4.25 - <http://msb.im/2Z5e>

Tear & Tape Adhesive [154031] - Price: \$7.00 - <http://msb.im/2Z5f>