

## Garden Poetry Sneak Peek Pop Up Block Thanks Card

---



**Link to the Original Project Blog Post:**

<https://wp.me/p5snyt-GJB>

**Link to Video on How to Make this Card:**

[https://youtube.com/live/YuIEWGUkw\\_Q](https://youtube.com/live/YuIEWGUkw_Q)

**Card Stock Cuts for this Project:**

**Shaded Spruce Cardstock:** 4 1/4" x 9 1/2" (card base - scored and folded at 2" and 4"); 3 1/4" x 5" (first pop-up block, scored at 1 1/2", 3" and 4 1/2"); 2" x 4" (second pop-up block, scored at 1", 2 1/2" and 3 1/2"); 1 1/2" x 3" (third pop-up block, scored at 1/2", 2" and 2 1/2")

**Basic White Cardstock:** Paradise Garden stamped and die cut flowers (3) and leaves (2); Paradise Garden die cut label (sentiment); 4" x 5 3/8" (back panel)

**Garden Poetry DSP:** 4 1/8" x 5 3/8" (large panel on inside of card); 1 7/8" x 4 1/8" (front panel); 1 3/8" x 3 1/8" (on first pop-up block); 1 3/8" x 1 7/8" (on second pop-up block); 1 3/8" x 1 3/8" (on third pop-up block); 2 1/4" x 6" (envelope flap)

## Instructions for this Project:

1. Score the 4 1/4" x 9 1/2" piece of Shaded Spruce cardstock at 2" and 4" on the long side.
2. Fold it as a z-fold (2" as a mountain and 4" as a valley).
3. Use Liquid Glue to adhere the 4 1/8" x 5 3/8" piece of **Garden Poetry DSP** to the large back panel.
4. Use Liquid Glue to adhere the 1 7/8" x 4 1/8" piece of the same DSP - this one with the leaves - on the front z-panel.
5. Ink the large leaf from **Paradise Garden** in Crushed Curry ink then use a Sponge Dauber to daub the ink in to make it less intense.
6. Use a second Sponge Dauber to add Pumpkin Pie ink near the center portions of the image. Note: try to blur the lines between the colors.
7. Stamp the leaf in the corner of the 4 1/8" x 5 3/8" piece of Basic White cardstock.
8. Stamp a **Paradise Garden** sentiment in Shaded Spruce ink.
9. Use Liquid Glue to adhere it to the back of the card base.



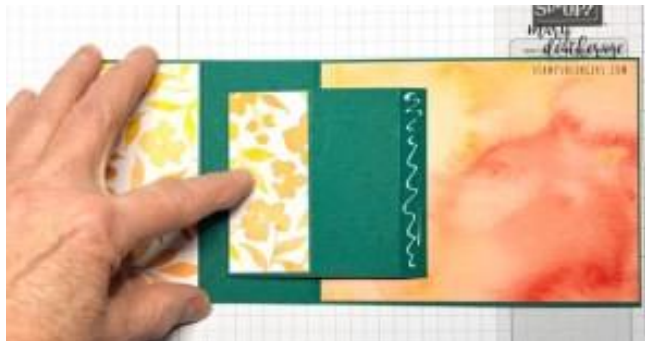
10. Score the 3 1/4" x 5" piece of Shaded Spruce cardstock at 1 1/2", 3" and 4 1/2" on the long side.
11. Fold all the score lines in the same direction.
12. Use Liquid Glue to adhere the 1 3/8" x 3 1/8" piece of **Garden Poetry DSP** to the middle large section of the panel.
13. Put Liquid Glue on the first section and snug it up to the 4" score line on the card base.



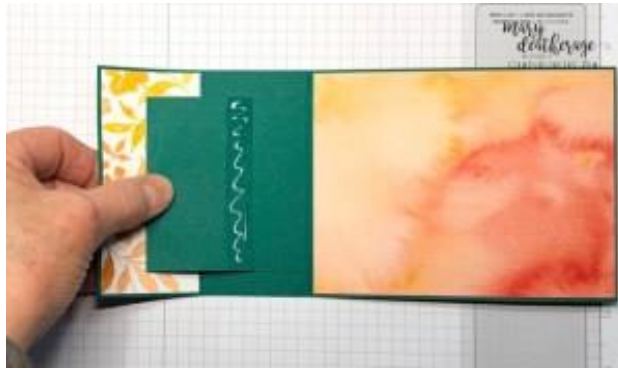
14. Close the card over the top to adhere it into the card base.



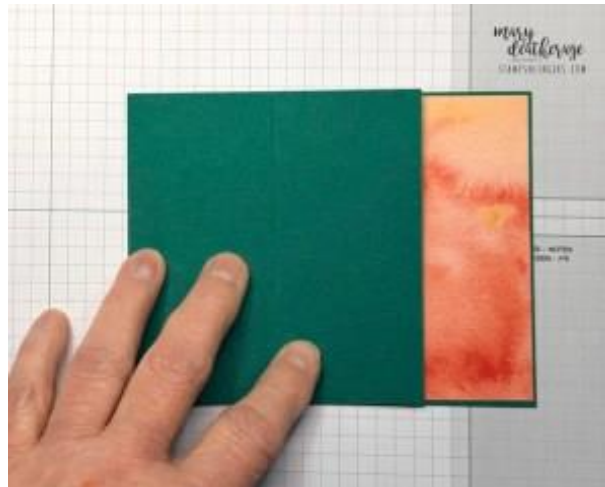
15. Put Liquid Glue on the narrow end panel...



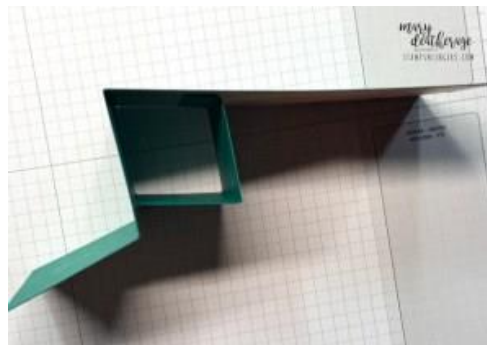
16. ...fold the block...



17. ...and close the card base.



18. That makes the first pop-up block set.

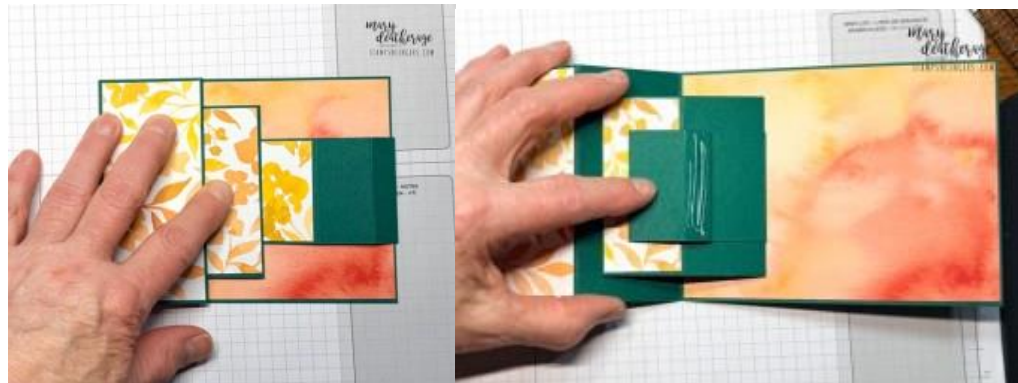


19. Score the 2" x 4" at 1", 2 1/2" and 3 1/2".

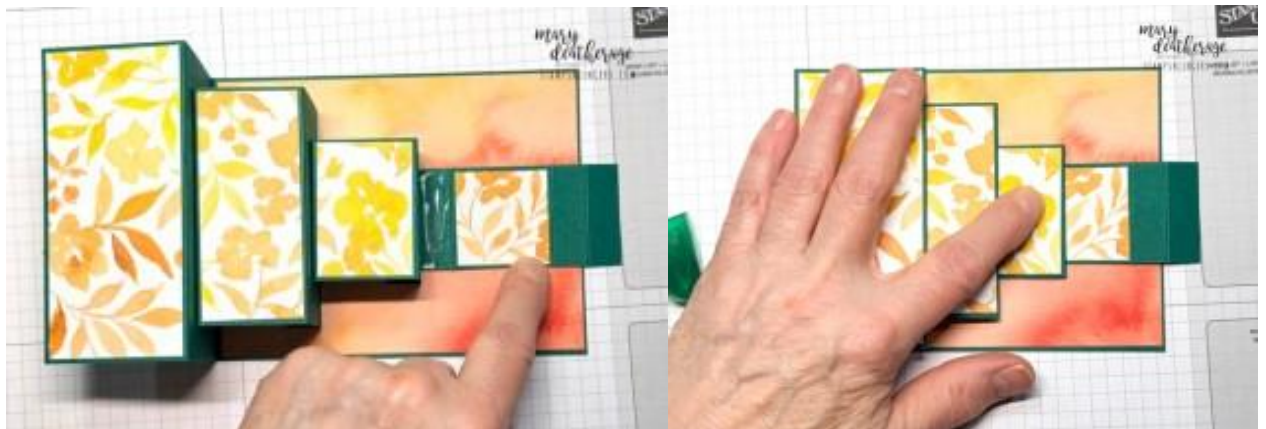
20. Use Liquid Glue to adhere the 1 3/8" x 1 7/8" piece of *Garden Poetry DSP* to the middle section.

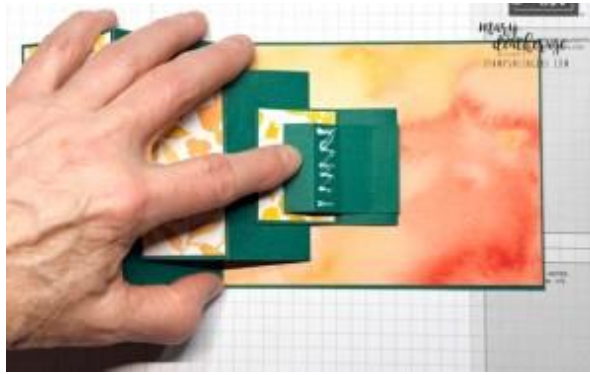
21. Create the pop up the same way you did the first one.



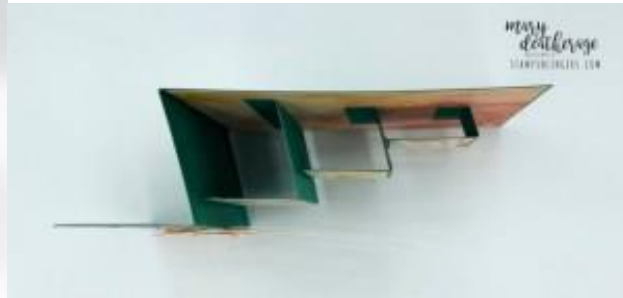


22. Score the 1 1/2" x 3" piece of Shaded Spruce cardstock at 1/2", 2" and 2 1/2".
23. Use Liquid Glue to adhere 1 3/8" x 1 3/8" piece of *Garden Poetry* to the middle section.
24. Place this block like you did the first two!





25. Here's how the blocks pop up.



26. On a piece of Basic White cardstock stamp three small *Paradise Garden* flowers in Poppy Parade ink.
27. Use the coordinating *Paradise Garden* die to cut them out.
28. On another piece of Basic White stamp the thank you sentiment in Shaded Spruce ink.
29. Use the larger banner die in the *Paradise Garden* die set to cut out the sentiment.
30. To make the two leaves for the front, ink the large leaf from *Paradise Garden* in Crushed Curry ink then use a Sponge Dauber to daub the ink in to make it less intense.
  - a) For one leaf, use a second Sponge Dauber to add Pumpkin Pie ink near the center portions of the image.
  - b) For the second leaf, use Poppy Parade ink for the second color.
  - c) Be sure to try to blur the lines between the colors.
31. Use the coordinating *Paradise Garden* die to cut them out.
32. Use Liquid Glue to adhere the leaves to the front panel of the card base.
33. Use Liquid Glue to adhere one flower.
34. Use Liquid Glue to adhere the sentiment - being careful to not get it anywhere other than the front panel.
35. Use Stampin' Dimensionals to adhere the final two flowers.



36. Add a solid Crushed Curry dot from the **Garden Epoxy Dots** to each of the flower centers.
37. Add three of the flowered Crushed Curry **Garden Epoxy Dots** on the back panel.
38. Stamp a Crushed Curry and Poppy Parade leaf on the front of the Basic White Medium Envelope.
39. Add a thin line of Liquid Glue around the edges of the envelope flap.
40. Lay the 2 1/4" x 6" piece of **Garden Poetry DSP** to the flap and rub it lightly to ensure it's stuck down.
41. Use Paper Snips to trim off the excess paper.
42. DONE!

**Please click on the links to the right to see and purchase the available item(s) in my Online Store:**

You'll also need the Paradise Garden bundle, Garden Poetry DSP and Garden Epoxy Dots when they're available

Shaded Spruce 8-1/2" X 11" Cardstock [146981] - Price: \$14.00 - <http://msb.im/2Z8U>  
 Basic White 8-1/2" X 11" Cardstock [166780] - Price: \$14.00 - <http://msb.im/2Z8V>  
 Shaded Spruce Classic Stampin' Pad [147088] - Price: \$9.00 - <http://msb.im/2Z8W>  
 Crushed Curry Classic Stampin' Pad [147087] - Price: \$9.00 - <http://msb.im/2Z8X>  
 Pumpkin Pie Classic Stampin' Pad [147086] - Price: \$9.00 - <http://msb.im/2Z8Y>  
 Poppy Parade Classic Stampin' Pad [147050] - Price: \$9.00 - <http://msb.im/2Z8Z>  
 Basic White Medium Envelopes [159236] - Price: \$11.00 - <http://msb.im/2Z8a>  
 Multipurpose Liquid Glue [110755] - Price: \$6.00 - <http://msb.im/2Z8b>  
 Stampin' Dimensionals [104430] - Price: \$4.25 - <http://msb.im/2Z8c>

Sponge Daubers [133773] - Price: \$7.50 - <http://msb.im/2Z8d>