

Modern Ornamental Christmas Step Fold Card



Link to the Original Project Blog Post:

<https://wp.me/p5snyt-Eoc>

Link to a Video on how to Make this Card:

<https://youtube.com/live/TykJuJ1jCjo>

Card Stock Cuts for this Project:

Basic Black Cardstock: 5 1/2" x 8" (card base, scored and folded at 3", 6" and 7"); 1 1/4" x 6" (center step panel, scored and folded at 4 1/4"); Ornamental Christmas die cut ornament (sentiment)

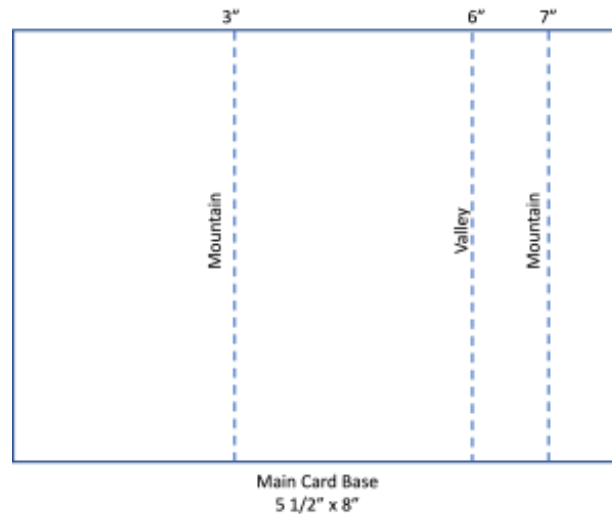
Gold Foil Sheets: 2 7/8" x 5 3/8" (mat for large front panel); 7/8" x 5 3/8" (mat for small front panel); 1 1/8" x 4 1/8" (mat for center step); Ornamental Christmas die cut large star, small star, ornaments on tree and "glimmers"

Basic White Cardstock: 2 7/8" x 5 3/8" (back panel)

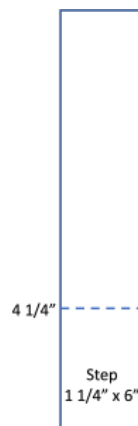
Modern Christmas Specialty DSP: 2 3/4" x 5 1/4" (large front panel); 3/4" x 5 1/4" (small front panel); 1" x 4" (center step); Ornamental Christmas die cut tree; ; 2 1/4" x 6" (envelope flap)

Instructions for this Project:

1. Score the $5\frac{1}{2}'' \times 8''$ piece of Basic Black cardstock along the long side at 3'', 6'' and 7''.
2. Fold the scored lines as a mountain (3''), valley (6'') and mountain (7''). This is the main card base.



3. Use Liquid Glue to adhere the $2\frac{3}{4}'' \times 5\frac{1}{4}''$ piece of the **Modern Christmas Specialty DSP** to the $2\frac{7}{8}'' \times 5\frac{3}{8}''$ piece of Gold Foil.
4. Use Liquid Glue to adhere it to the larger front panel.
5. Use Liquid Glue to adhere the $\frac{3}{4}'' \times 5\frac{1}{4}''$ piece of the **Modern Christmas Specialty DSP** to the $\frac{7}{8}'' \times 5\frac{3}{8}''$ piece of Gold Foil.
6. Use Liquid Glue to adhere it to the narrow front panel - Note: this DSP pattern has an "up and down" direction, so...be sure you're making note of that as you cut the pieces.
7. Score the $1\frac{1}{4}'' \times 6''$ piece of Basic Black cardstock at $4\frac{1}{4}''$ - and fold it as a mountain. That's the step panel.



8. Use Liquid Glue to adhere the $1'' \times 4''$ piece of the **Modern Christmas Specialty DSP** on the $1\frac{1}{8}'' \times 4\frac{1}{8}''$ piece of Gold Foil.

9. Use Liquid Glue to adhere it to the longer end of the step panel.
10. Use Liquid Glue on the bottom 1" of the step panel and adhere it to the narrow bottom strip - centering it and aligning the bottoms.
11. Close the card base and use more Liquid Glue to adhere the smaller portion of the panel to the back of the main card base - thus creating the center step.
12. On the 2 7/8" x 5 3/8" piece of Basic White cardstock stamp the sentiment from the **Ornamental Christmas** stamp set in Versamark Ink.
13. Sprinkle it with gold **Metallics WOW! Embossing Powder** and heat set it with the Heat Tool.
14. When it's cool stamp the **Ornamental Christmas** tree three times in Tuxedo Black Memento Ink.
15. When that's dry, use Liquid Glue to adhere the panel to the back of the card base.



16. Note: in the video - you'll see how you can cut all the Gold Foil pieces from the Gold Foil mats I'd cut - obviously BEFORE matting them if you want to do that
17. Use the dies in the **Ornamental Christmas** set to cut out:
 - a) Four "glimmers" from Gold Foil. You'll only need three - but the dies each cut out two at a time.
 - b) One large star from Gold Foil.
 - c) One small star from Gold Foil.
 - d) Two of the ornament hangars/tree stands from Gold Foil. These both look the same!
 - e) Five round ornaments from Gold Foil - the die will cut out all of them at once.
 - f) One Christmas tree from another piece of the **Modern Christmas Specialty DSP**.
18. Use Liquid Glue to adhere the small star, the five round ornaments and one of the tree stands - to the die cut Christmas tree. Note: The tree stand goes on with the wide-end-UP to be a tree stand.
19. Use scrunched up Glue Dots to adhere a **Large Gold Hoop** to the step panel.
20. Use small Black Stampin' Dimensionals to adhere the large die cut Gold Foil star.

21. Use small Black Stampin' Dimensionals to adhere the decorated tree to the step panel.
22. On a piece of Basic Black cardstock stamp a second **Ornamental Christmas** sentiment in Versamark ink.
23. Sprinkle it with gold Metallic WOW! Embossing Powder and heat set it with the Heat Tool.



24. When the embossing powder has cooled use the ornament die from **Ornamental Christmas** to cut it out.
25. Use Liquid Glue to adhere the second "tree stand" to the top - with the wide-end-DOWN!
26. Tie a small loop from white twine from the **Black & White & Gold Baker's Twine** and adhere it on the back of the ornament with a Glue Dot.
27. Use a combination of black Stampin' Dimensionals and Liquid Glue to adhere the ornament to the step panel.
28. Use Liquid Glue to adhere three of the gold foil die cut "glimmers".
29. Stamp the **Ornamental Christmas** trees on the front of the Basic White Medium Envelope.
30. Add a thin line of Liquid Glue around the edges of the envelope flap.
31. Lay the 2 1/4" x 6" piece of **Modern Christmas Specialty DSP** on the flap and rub it lightly to ensure it's stuck down.
32. Use Paper Snips to trim off the excess paper.
33. DONE!

Please click on the links to the right to see and purchase the available item(s) in my Online Store:

You'll also need the Ornamental Christmas Bundle, Modern Christmas Specialty DSP, Large Gold Hoops and Black & White & Gold Baker's Twine when they're available!

Gold Foil Sheets [132622] - Price: \$5.00 - <http://msb.im/2TwW>

Basic Black 8-1/2" X 11" Cardstock [121045] - Price: \$14.00 - <http://msb.im/2TwX>

Basic White 8-1/2" X 11" Cardstock [166780] - Price: \$14.00 - <http://msb.im/2TwY>

Tuxedo Black Memento Ink Pad [132708] - Price: \$8.00 - <http://msb.im/2TwZ>

Versamark Pad [102283] - Price: \$9.50 - <http://msb.im/2Twa>

Metallics Wow! Embossing Powder [165678] - Price: \$21.00 - <http://msb.im/2Twb>

Multipurpose Liquid Glue [110755] - Price: \$6.00 - <http://msb.im/2Twc>

Black Stampin' Dimensionals Combo Pack [150893] - Price: \$6.25 - <http://msb.im/2Twd>

Mini Glue Dots [103683] - Price: \$7.25 - <http://msb.im/2Twe>

Heat Tool [129053] - Price: \$32.00 - <http://msb.im/2Twf>