

# Faux Embossed Perfectly Painterly Pears Hello Card



**Link to the Original Project Blog Post:**

<https://wp.me/p5snyt-Ekw>

**Link to a Video on how to Make this Card:**

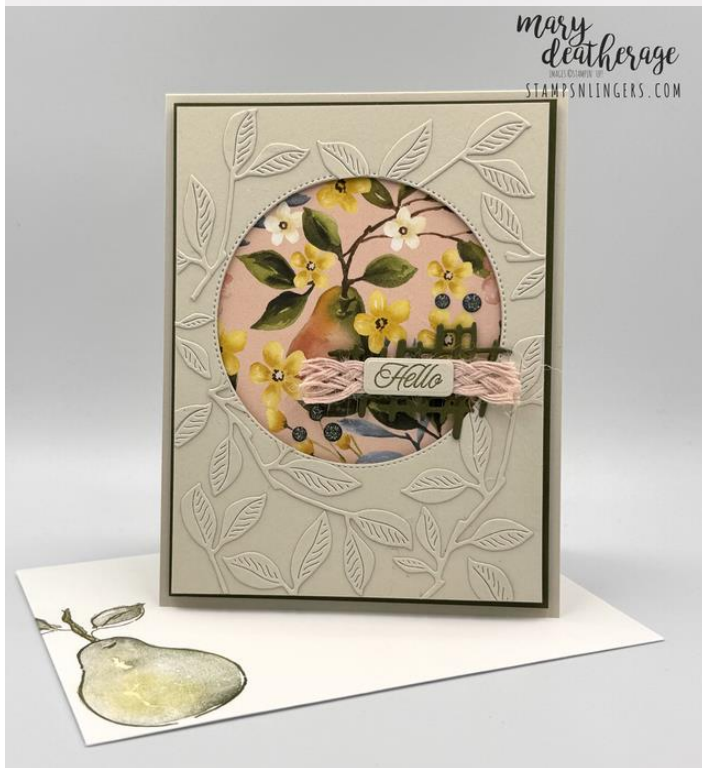
<https://youtube.com/shorts/MJRjIvcuVCI>

**Card Stock Cuts for this Project:**

**Basic Beige Cardstock:** 4 1/4" x 11" (card base, scored and folded at 5 1/2"); 3 7/8" x 5 1/8" (card front); 4" x 5 1/4" (inner liner); Perfectly Pears die cut label (sentiment); Perfectly Pears die cut leaves (5 or 6 - for faux embossing)

**Mossy Meadow Cardstock:** 4" x 5 1/4" (mat for card front); Perfectly Pears die cut hashmark

**Painterly Pears DSP:** 3 1/4" x 4 1/4" (approx - behind window); 4" x 5 1/4" (inner liner)



## Instructions for this Project:

1. Use the large leaf die from the **Perfectly Pears** die set to cut out 5 or 6 leaves in Basic Beige cardstock.
2. Use Liquid Glue to adhere the die cuts all over the 3 7/8" x 5 1/8" piece of Basic Beige cardstock - letting some of them spill off the edges. Note - snip leaves here and there to fill in gaps - and then trim the excess from the edges as needed.
3. Use the largest circle die from the **Stylish Shapes** dies to cut out a circle from the middle of the panel - cheating it a little towards the top.
4. From the center of the 4" x 5 1/4" piece of Mossy Meadow cardstock use the hashmark die from **Perfectly Pears** to cut out a hashmark.
5. Use Liquid Glue to adhere the 3 1/4" x 4 1/4" piece of **Painterly Pears DSP** to the Mossy Meadow panel. Note: when you cut this piece of DSP - be thinking about what you want to showcase in the circle. Then, when you adhere it to the mat - be sure that part IS going to be in the middle of your "window".
6. Use Stampin' Dimensionals to adhere the card front to the mat - framing the DSP as desired.
7. Use Liquid Glue to adhere a short length of **Petal Pink 5 1/6" Braided Trim** to the Mossy Meadow die cut hashmark and gently fray the ends of the trim.
8. On a piece of Basic Beige cardstock stamp the **Perfectly Pears** sentiment in Mossy Meadow ink.
9. Use the small label die from the **Perfectly Pears** die set to cut out the sentiment.
10. Use Glue Dots to adhere the sentiment to the braided trim.
11. Use Stampin' Dimensionals to adhere the whole thing to the card front.
12. Add five Secret Sea **Low Profile Sparkle Dots**.
13. In the bottom corner of the 4" x 5 1/4" piece of Basic Beige cardstock stamp the pear outline and fill images in Mossy Meadow ink.
14. Stamp the stem/leaves outline in Pecan Pie ink and the fill image in Mossy Meadow.
15. Using a Sponge Dauber add a smidge of Darling Duckling ink to the pear.



16. Use Liquid Glue to adhere the panel to the inside of the Basic Beige card base.
17. Use Stampin' Dimensionals to adhere the card front to the front of the card base.
18. Stamp the **Perfectly Pears** pear on the front of the Basic White Medium Envelope.
19. Add a thin line of Liquid Glue around the edges of the envelope flap.
20. Lay the 2 1/4" x 6" piece of **Painterly Pears DSP** on the flap and rub it lightly to ensure it's stuck down.
21. Use Paper Snips to trim off the excess paper.
22. DONE!

**Please click on the links to the right to see and purchase the available item(s) in my Online Store:**

Perfectly Pears Bundle (English) [166154] - Price: \$42.25 - <http://msb.im/2To2>  
Stylish Shapes Dies [159183] - Price: \$30.00 - <http://msb.im/2To3>  
Painterly Pears 12" X 12" (30.5 X 30.5 Cm) Designer Series Paper [166146] - Sale: \$10.63 - <http://msb.im/2To4>  
Basic Beige 8-1/2" X 11" Cardstock [164511] - Price: \$14.00 - <http://msb.im/2To5>  
Mossy Meadow 8-1/2" X 11" Cardstock [133676] - Price: \$14.00 - <http://msb.im/2To6>  
Mossy Meadow Classic Stampin' Pad [147111] - Price: \$9.00 - <http://msb.im/2To7>  
Pecan Pie Classic Stampin' Pad [161665] - Price: \$9.00 - <http://msb.im/2To8>  
Darling Duckling Classic Stampin' Pad [165277] - Sale: \$7.65 - <http://msb.im/2To9>  
Low Profile Sparkle Dots [166157] - Sale: \$8.08 - <http://msb.im/2ToA>  
Petal Pink 5/16" (8 Mm) Braided Trim [166140] - Price: \$13.00 - <http://msb.im/2ToB>  
Basic White Medium Envelopes [159236] - Price: \$11.00 - <http://msb.im/2ToC>  
Multipurpose Liquid Glue [110755] - Price: \$6.00 - <http://msb.im/2ToD>  
Stampin' Dimensionals [104430] - Price: \$4.25 - <http://msb.im/2ToE>  
Mini Glue Dots [103683] - Price: \$7.25 - <http://msb.im/2ToF>  
Sponge Daubers [133773] - Price: \$7.50 - <http://msb.im/2ToG>