

Sunrise Sailing Book Fold Easel Card



Link to the Original Project Blog Post:

<https://wp.me/p5snyt-DKh>

Card Stock Cuts for this Project:

Summer Splash Cardstock: 4 1/4" x 11" (card base, scored and folded at 5 1/2", 6 3/4" and 8 7/8")

Pretty in Pink Cardstock: 1" x 4" (mat for book fold panel); 4" x 4" (x2 - mat for card front and for inner liner); 1 7/8" x 4" (mat for easel top panel); 7/8" x 4" (mat for easel stop)

Basic Black Cardstock: Die cut Sunrise Sailing seagulls (x3)

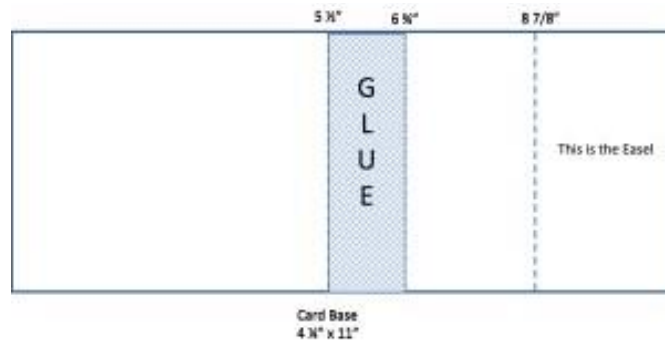
Basic White Cardstock: 3 7/8" x 3 7/8" (x2 - card front and inner liner); stamped and die cut Sunrise Sailing sailboat; 3/4" x 3 7/8" (easel stop)

2024-2026 In Color 6" x 6" DSP: 7/8" x 3 7/8" (book fold panel); 3 7/8" x 3 7/8" (card front); 1 3/4" x 3 7/8" (easel top panel); 2 1/4" x 6" (envelope flap)

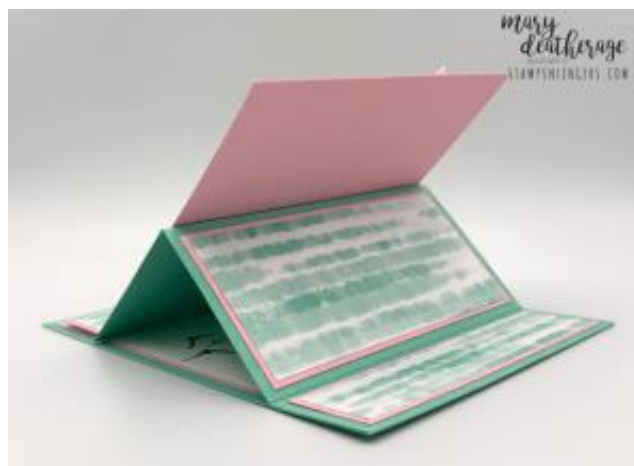
)

Instructions for this Project:

1. Score the 4 1/4" x 11" piece of Summer Splash along the long edge at 5 1/2", 6 3/4" and 8 7/8".
2. Fold the 5 1/2" score as a mountain (like a regular card). Then fold the 6 3/4" score the opposite direction. Finally - fold the 8 7/8" score opposite that (so...another mountain).

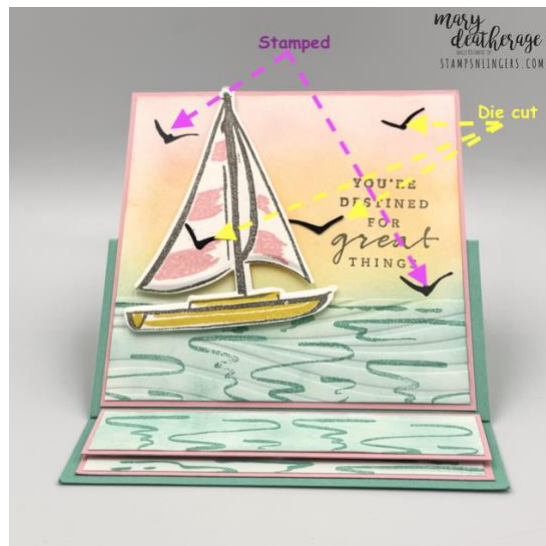


3. Use Liquid Glue between the two closest score lines (5 1/2" and 6 3/4") and then press the card front to the back - this adheres them together and creates the top-fold.
4. Use Liquid Glue to adhere the 7/8" x 3 7/8" piece of Summer Splash **2024-2026 In Color 6" x 6" DSP** on the 1" x 4" piece of Pretty in Pink cardstock.
5. Use Liquid Glue to adhere the matted panel to the "book fold panel" - that's the narrow panel where the Liquid Glue went.
6. Use Liquid Glue to adhere the 1 3/4" x 3 7/8" piece of Summer Splash **2024-2026 In Color 6" x 6" DSP** on the 1 7/8" x 4" piece of Pretty in Pink cardstock.
7. Use Liquid Glue to adhere the matted panel to the top easel panel (between the glued section and the "easel").

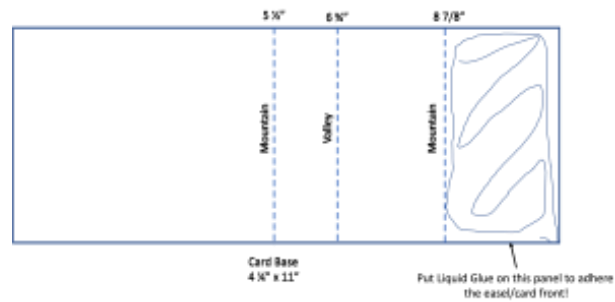


8. Use Small Blending Brushes to add color to one of the 3 7/8" x 3 7/8" pieces of Basic White cardstock.
 - a) Summer Splash ink in the bottom portion.

- b) Pretty in Pink near the top.
 - c) Timid Tiger and Darling Duckling in the middle section.
9. Stamp the swirly waves images from ***Sunrise Sailing*** in Summer Splash ink across the bottom of the panel.
 10. Place just the Summer Splash portion of the panel into the ***So Swirly 3D Embossing Folder*** and run it thru the Stampin' Cut and Emboss Machine.
 11. Stamp the ***Sunrise Sailing*** sentiment in Basic Gray ink.
 12. Use Liquid Glue to adhere the panel on one of the 4" x 4" pieces of Pretty in Pink cardstock.
 13. To make the sailboat, stamp the image in Basic Gray on a piece of Basic White cardstock.
 14. Stamp the sail detail in Pretty in Pink ink and the hull detail in Darling Duckling ink.
 15. Place the sailboat die - and the stamped cardstock - into the ***Sunrise Sailing Hybrid Embossing Folder*** and run it thru the Stampin' Cut and Emboss Machine. That will emboss the sailboat and cut it out at the same time.
 16. Use Stampin' Dimensionals to adhere the sailboat to the card front. NOTE: when you make this - be sure the tippy top of the sail is NOT extending past the mat (or it'll get bent up when the card is opened!).
 17. Stamp the little bird image from ***Sunrise Sailing*** twice in Tuxedo Black Memento Ink.
 18. Use the die in the set to cut out three Basic Black birds.
 19. Use little dabs of Liquid Glue to adhere them to the card front.



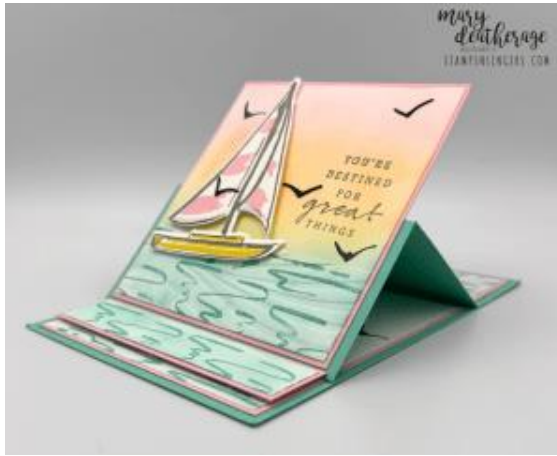
20. Add Liquid Glue to the easel panel of the card base and adhered the card front panel to that - just on the bottom half - creating the easel.



21. On the second 3 7/8" x 3 7/8" piece of Basic White cardstock stamp the second ***Sunrise Sailing*** sentiment in Basic Gray ink.
22. Across the bottom, stamp ***Sunrise Sailing*** waves in Summer Splash ink.
23. Add Summer Splash ink with the Small Blending Brush.
24. Use Liquid Glue to adhere the panel to the second 4" x 4" piece of Pretty in Pink cardstock.
25. Use Liquid Glue to adhere the matted panel to the inside of the card base.



26. On the 3/4" x 3 7/8" piece of Basic White cardstock, stamp the waves in Summer Splash ink.
27. Add more Summer Splash with the Small Blending Brush.
28. Emboss the strip in the ***So Swirly 3D Embossing Folder***.
29. Use Liquid Glue to adhere the strip to the 7/8" x 4" piece of Pretty in Pink cardstock.
30. Use Stampin' Dimensionals to adhere it to the inner panel to create the easel stop.



31. Stamp the **Sunrise Sailing** gull three times in Tuxedo Black Memento ink - around the sentiment and just above the "water" on the easel stop.
32. Stamp the **Sunrise Sailing** waves and gull and add a little color with the Small Blending Brush on the front of the Basic White Medium Envelope.
33. Add a thin line of Liquid Glue around the edges of the envelope flap.
34. Lay the 2 1/4" x 6" piece of Summer Splash **2024-2026 In Color DSP** on the flap and rub it lightly to ensure it's stuck down.
35. Use Paper Snips to trim off the excess paper.
36. DONE!

Please click on the links to the right to see and purchase the available item(s) in my Online Store:

Sunrise Sailing Bundle (English) [165497] - Price: \$50.25 - <http://msb.im/2SJw>
 So Swirly Embossing Folder [163791] - Price: \$10.50 - <http://msb.im/2SJx>
 Summer Splash 8-1/2" X 11 Cardstock [163797] - Price: \$14.00 - <http://msb.im/2SJy>
 Pretty In Pink 8-1/2" X 11" Cardstock [163793] - Price: \$14.00 - <http://msb.im/2SJz>
 Basic White 8-1/2" X 11" Cardstock [166780] - Price: \$14.00 - <http://msb.im/2SK0>
 Basic Black 8-1/2" X 11" Cardstock [121045] - Price: \$14.00 - <http://msb.im/2SK1>
 Pretty In Pink Classic Stampin' Pad [163807] - Price: \$9.00 - <http://msb.im/2SK2>
 Timid Tiger Classic Stampin' Pad [165278] - Price: \$9.00 - <http://msb.im/2SK3>
 Darling Duckling Classic Stampin' Pad [165277] - Price: \$9.00 - <http://msb.im/2SK4>
 Summer Splash Classic Stampin' Pad [163809] - Price: \$9.00 - <http://msb.im/2SK5>
 Basic Gray Classic Stampin' Pad [149165] - Price: \$9.00 - <http://msb.im/2SK6>
 Tuxedo Black Memento Ink Pad [132708] - Price: \$8.00 - <http://msb.im/2SK7>
 Basic White Medium Envelopes [159236] - Price: \$11.00 - <http://msb.im/2SK8>
 Multipurpose Liquid Glue [110755] - Price: \$6.00 - <http://msb.im/2SK9>
 Stampin' Dimensionals [104430] - Price: \$4.25 - <http://msb.im/2SKA>
 Paper Trimmer [152392] - Price: \$28.00 - <http://msb.im/2SKB>