

Winterly Tree Tops Double-Stack Sneak Peak Card



[Link to the Original Project Blog Post:](https://wp.me/p5snyt-yXP)
<https://wp.me/p5snyt-yXP>

Card Stock Cuts for this Project:

Copper Clay Cardstock: 4 1/4" x 5 1/2" (card base); 4 1/4" x 11" (folding mechanism - score/fold at 2", 3 3/4", 7 1/4" and 9")

Basic Beige Cardstock: 3/4" x 4" (x2 - embossed strips on card base); 3 3/4" x 4" (mat for "top" stack); 3 1/2" x 3 3/4" (x2 - embossed panel for "top" stack/sentiment and mat for "bottom" stack); 3 1/4" x 4" (inner liner)

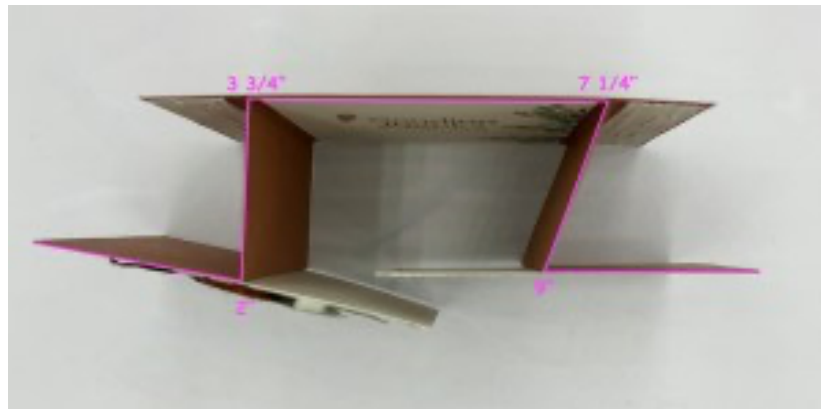
Nests of Winter DSP: 3 1/4" x 3 1/2" (DSP on "bottom" stack); Winterly Tree Tops Die cut birds on front; 2 1/4" x 6" (envelope flap)

Instructions for this Project:

1. Emboss a 1 1/2" x 4" piece of Basic Beige cardstock in the *Birch 3D Embossing Folder*.
2. Cut the panel in half to make two 3/4" x 4" strips.
3. Use Liquid Glue to adhere a strip to each end of the 4 1/4" x 5 1/2" piece of Cajun Craze cardstock.



4. Score the 4 1/4" x 11" piece of Copper Clay cardstock at 2", 3 3/4", 7 1/4" and 9".
5. Fold the two middle score lines "in" and the two outer score lines "out",



6. On the 3 1/4" x 4" piece of Basic Beige cardstock (with the short side being the horizontal edge), stamp a *Winterly Tree Tops* sentiment in Cajun Craze ink.
7. Up the side, use the swag image in the set to stamp three times in Shaded Spruce ink.
8. Color the leaves with the Light and Dark Shaded Spruce Stampin' Blends and the berries with the Light Wild Wheat Blend.



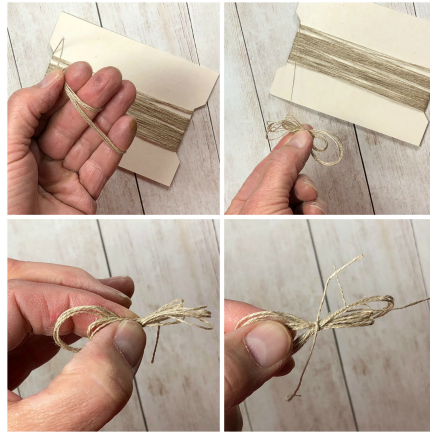
9. Use Liquid Glue to adhere the panel to the inside of the folding mechanism.
10. Use Liquid Glue to adhere the entire mechanism onto to the card base - centering it between the two embossed cardstock strips.
11. Use Liquid Glue to adhere the 3 1/4" x 3 1/2" piece of pussy-willow-strewn *Nested in Winter DSP* to one of the 3 1/2" x 3 3/4" pieces of Basic Beige cardstock (with the short side being the horizontal edge).
12. Use Liquid Glue just on the right side of the matted panel to adhere it onto the right-side of the folding mechanism. Note - this is the "bottom" stacker.



13. On the bottom of the 3 1/2" x 3 3/4" piece of Basic Beige cardstock (with the short side being the horizontal edge), stamp the *Winterly Trees* sentiment in Cajun Craze ink.
14. Emboss the panel in the *Birch 3D Embossing Folder*.
15. Use Liquid Glue to adhere the embossed panel on the remaining 3 3/4" x 4" piece of Basic Beige cardstock.



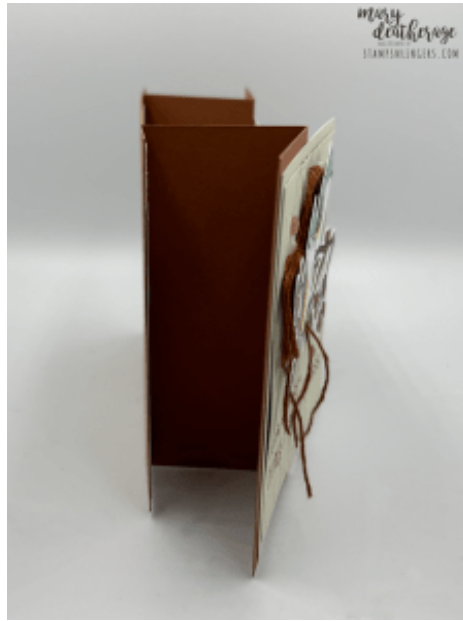
16. Using a piece of Cajun Craze *Natural Tones Linen Thread*, tie a Double-Loop Linen Thread bow.
 - a) Wrap the Linen Thread around four fingers four times.
 - b) Without cutting the thread, wrap around two fingers four times.
 - c) Pull the loops off and squeeze the loops together.
 - d) Twist the loops one time around to create a "figure 8".
 - e) Tie a second short length of Thread around the loops in the middle.
 - f) Spread the loops out to create a bow.



17. Use Liquid Glue to adhere the bow to the embossed panel.
18. Use the die in the Winterly Tree Tops die set cut out the double-bird image from the *Nests of Winter DSP*.
19. Use double stacked Stampin' Dimensionals to adhere the die cut over the top of the Linen Thread bow.



20. Use Liquid Glue on the LEFT side of the matted panel to adhere the matted panel to the LEFT-side of the folding mechanism. That makes it the "top" stacker.



21. Add three Copper Clay *Earth Tones Shimmer Gems* on the "top" stacker and one on the inner.
22. Stamp and color the *Winterly Tree Tops* sprigs in Shaded Spruce and Wild Wheat on the front of the Basic White Medium Envelope.
23. Add a thin line of Liquid Glue around the edges of the envelope flap.
24. Lay the 2 1/4" x 6" piece of *Nests of Winter DSP* over the flap and rub it lightly to ensure it's stuck down.
25. Use Paper Snips to trim off the excess paper.
26. DONE! ☺

Please click on the links to the right to see and purchase the available item(s) in my Online Store:

You'll also need the Winterly Tops Bundle, Nests of Winter DSP, Birch 3D Embossing Folder, Natural Tones Linen Thread and Earth Tones Shimmer Gems when they're available from the Sept - Dec 2024 Mini Catalog.

Copper Clay 8-1/2" X 11" Cardstock [161721] - Price: \$11.50 - <http://msb.im/2Cms>
Basic Beige 8-1/2" X 11" Cardstock [164511] - Price: \$11.50 - <http://msb.im/2Cmt>
Cajun Craze Classic Stampin' Pad [147085] - Price: \$9.00 - <http://msb.im/2Cmu>
Shaded Spruce Classic Stampin' Pad [147088] - Price: \$9.00 - <http://msb.im/2Cmv>
Shaded Spruce Stampin' Blends Combo Pack [154903] - Price: \$11.00 - <http://msb.im/2Cmw>
Wild Wheat Stampin' Blends Combo Pack [161661] - Price: \$11.00 - <http://msb.im/2Cmx>
Multipurpose Liquid Glue [110755] - Price: \$6.00 - <http://msb.im/2Cmy>
Basic White Medium Envelopes [159236] - Price: \$11.00 - <http://msb.im/2Cmz>
Stampin' Dimensionals [104430] - Price: \$4.25 - <http://msb.im/2Cn0>