

Countryside Christmas Joy of Noel Treat Boxes



Link to the Original Project Blog Post:

<https://wp.me/p5snyt-uVB>

Link to Video on How to Make this Card:

<https://youtube.com/live/1wVWo7rn7-Q>

Card Stock Cuts for this Project:

Pebbled Path Cardstock: 5" x 6" (treat box - scored and folded as shown); 7/8" x 5" (handle)

Cherry Cobbler Cardstock: Radiant Stitches die cut circle

Shaded Spruce Cardstock: Joy of Noel die cut pine bough

Gold Foil: Joy of Noel die cut holly leaf

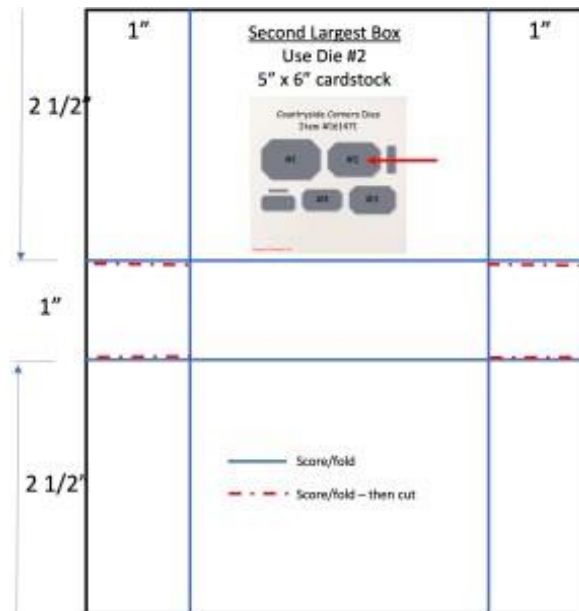
Old Olive Cardstock: Christmas Classics die cut sprig

Very Vanilla Cardstock: Tailor Made Tags die cut (sentiment)

Joy of Christmas DSP: Next-to-Largest Countryside Corners die cuts (x2); Joy of Noel die cut sentiment

Instructions for this Project:

1. Use the next-to-largest **Countryside Corners** die to cut out two pieces from the Pebbled Path design **Joy of Christmas DSP**.
2. Use the Simply Scored Score Tool to score the 5" x 6" piece of Pebbled Path cardstock at 1" and 4" on the short side of the cardstock.
3. Rotate the panel 90 degrees in the Score Tool and score it at 2 1/2" and 3 1/2" on the long side. Note: that's 2 1/2" from each edge!



4. Fold and burnish all the scored lines and use Paper Snips to make a couple of cuts to create the tabs - those are the dotted red lines on the photo above.
5. Use Tear & Tape Adhesive to adhere the box together. Note: Check out the video to see how to do this step.
6. Use a Bone Folder to lightly curl the 7/8" x 5" strip of Pebbled Path cardstock.
7. Use Tear & Tape Adhesive on each end to adhere the ends to the sides of the box to make the handle. Again - the video is the best way to see how to do this - it starts at about the 5:19 point!
8. Use Liquid Glue on the sides of the box to adhere the two **Countryside Corners** die cut **Joy of Christmas DSP** pieces, making sure to center the die cuts on the box and line up the bottom with the bottom of the box.



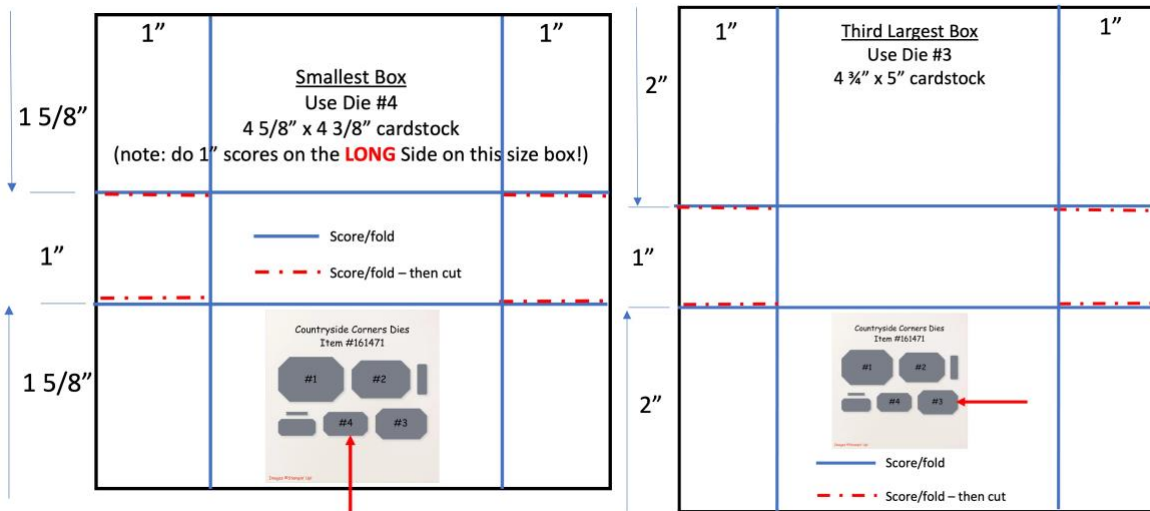
9. Use the **Joy of Noel** die set to cut out the NOEL sentiment from a piece of Cherry Cobbler plaid Joy of Christmas DSP.
10. Use Liquid Glue to adhere the letters to the side of the box, centering the word on the handle.
11. Use the **Joy of Noel** dies to cut out a Shaded Spruce pine bough and a Gold Foil holly leaf.
12. Use the **Christmas Classics** dies to cut out an Old Olive sprig.
13. Use Liquid Glue to adhere the foliage near the base of the handle.





14. Use the smallest **Tailor Made Tag** die to cut a piece of Very Vanilla cardstock.
15. Stamp the sentiment from Joy of Noel in Cherry Cobbler.
16. Use the small circle die from the **Radiating Stitches** set to cut out a Cherry Cobbler circle.
17. Use Liquid Glue to adhere the sentiment tag to the circle.
18. Use Liquid Glue to adhere the circle/sentiment combination to the side of the box.
19. Tie a simple bow from two lengths of Linen Thread.
20. Use Liquid Glue to adhere the bow to the sentiment.
21. Add five gold Blooming Pearls.
22. DONE! 😊

Here are the templates for the other two sizes of treat box.



Please click on the links to the right to see and purchase the available item(s) in my Online Store:

- Joy Of Noel Bundle (English) [161967] - Price: \$48.50 - <http://msb.im/1z3W>
- Countryside Corners Dies [161471] - Price: \$28.00 - <http://msb.im/1z3X>
- Christmas Classics Dies [161976] - Price: \$37.00 - <http://msb.im/1z3Y>
- Radiating Stitches Dies [161595] - Price: \$30.00 - <http://msb.im/1z3Z>
- Tailor Made Tags Dies [155563] - Price: \$22.00 - <http://msb.im/1z3a>
- Joy Of Christmas 12" X 12" (30.5 X 30.5 Cm) Designer Series Paper [161958] - Price: \$12.50 - <http://msb.im/1z3b>
- Gold Foil Sheets [132622] - Price: \$5.00 - <http://msb.im/1z3c>
- Pebbled Path 8-1/2" X 11" Cardstock [161722] - Price: \$10.00 - <http://msb.im/1z3d>
- Cherry Cobbler 8-1/2" X 11" Cardstock [119685] - Price: \$10.00 - <http://msb.im/1z3e>
- Shaded Spruce 8-1/2" X 11" Cardstock [146981] - Price: \$10.00 - <http://msb.im/1z3f>
- Old Olive 8-1/2" X 11" Cardstock [100702] - Price: \$10.00 - <http://msb.im/1z3g>
- Very Vanilla 8-1/2" X 11" Cardstock [101650] - Price: \$10.50 - <http://msb.im/1z3h>
- Cherry Cobbler Classic Stampin' Pad [147083] - Price: \$9.00 - <http://msb.im/1z3i>
- Linen Thread [104199] - Price: \$5.00 - <http://msb.im/1z3j>
- Blooming Pearls [162238] - Price: \$8.00 - <http://msb.im/1z3k>
- Tear & Tape Adhesive [154031] - Price: \$7.00 - <http://msb.im/1z3l>
- Multipurpose Liquid Glue [110755] - Price: \$5.50 - <http://msb.im/1z3m>
- Simply Scored Scoring Tool [122334] - Price: \$36.00 - <http://msb.im/1z3n>