

Greatest Journey Flying Seagull Fun Fold Card



Link to the Original Project Blog Post:

<https://wp.me/p5snyt-s9A>

Link to Video on How to Make This Card:

<https://youtube.com/live/2d6BSdK6ops>

Card Stock Cuts for this Project:

Starry Sky or Basic Black Cardstock: 4 1/4" x 8 1/4" (x2 - card bases - scored and folded at 2 1/4", 4" and 6 1/4"); 4 1/4" x 4 1/4" (pop up panel); Greatest Journey die cut hiker, hiking pole and mountain

Highland Heather or Coastal Cabana

Cardstock: 2 1/8" x 4 1/8" (x4 - mats for wider front panels and mats for back panels); 1 5/8" x 4 1/8" (x2 - mat for narrower front panels); 4 1/8" x 4 1/8" (mat for pop up panel); small Stitched Rectangle Die (sentiment)

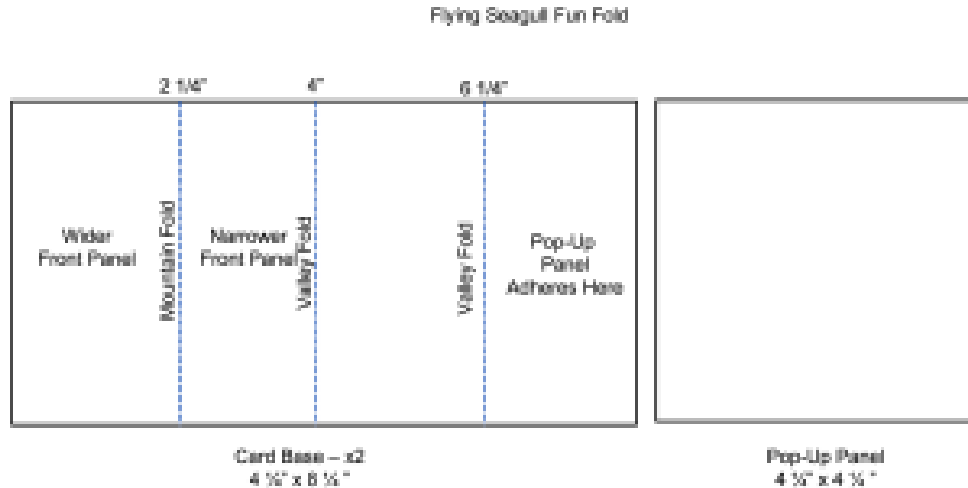
Basic White Cardstock: 2" x 4" (x2 - back panels); Greatest Journey die cut clouds (x2)

Enjoy the Journey DSP: 2" x 4" (x2 - wider front panels); 1 1/2" x 4" (narrower front panels); 4" x 4" (pop up panel); 2 1/4" x 6" (envelope flap)

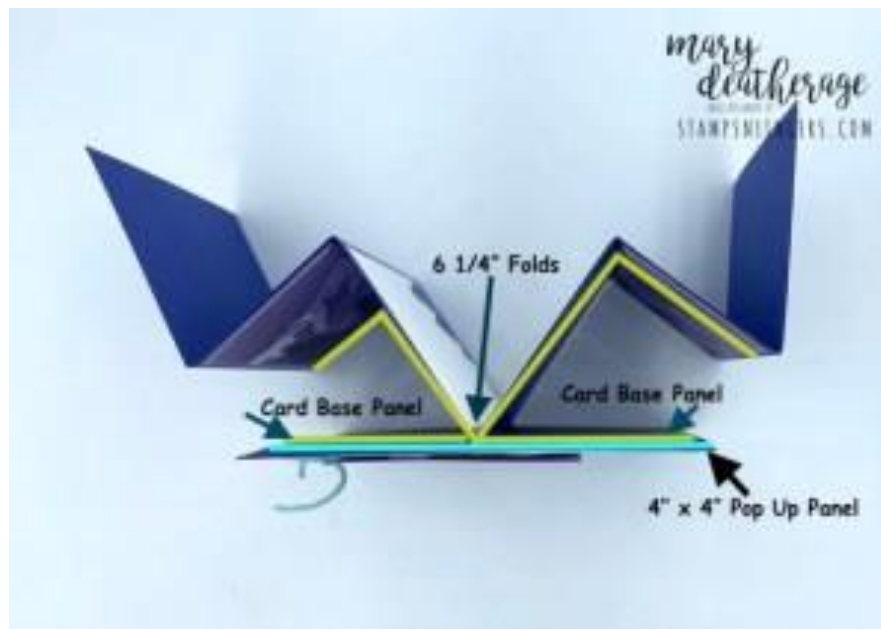


Instructions for this Project:

1. Score each of the 4 1/4" x 8 1/4" pieces of cardstock (Starry Sky or Basic Black) at 2 1/4", 4" and 6 1/4".
2. Fold the 2 1/4" fold on each base as a mountain fold and the other two as valley folds.



3. Fold the 6 1/4" score line back on itself on both card base pieces - and then "butt" the folds up to each other.
4. Put Liquid Glue on the panels and use that to adhere the 4" x 4" Starry Sky/Basic Black pop up panel. Tip: it's really best to check the video on how to do this part - it starts at about the 8 minute mark.



5. Cut a piece of the *Enjoy the Journey DSP* to 4" tall and the full 12" wide.



6. Use the Paper Trimmer and, starting on the left side of the DSP panel, cut a 2" panel, then a 1 1/2" panel, then a 4" panel, another 1 1/2" panel and finally a 2" panel. Tip: cutting the DSP this way creates a contiguous scene across the card base.
7. Use Liquid Glue to adhere all the DSP panels to their Highland Heather or Coastal Cabana mats.
8. Use Liquid Glue to adhere the four smaller panels to the card front with Liquid Glue. Tip: be sure to get the panels in the correct position to maintain the mountain scene.



9. Use the edge die from the *Greatest Adventure* die set to cut a "mountain top" from a 4" wide piece of Starry Sky (or Basic Black, depending on the card) cardstock.
10. Use Liquid Glue to adhere the die cut mountain to the bottom of the 4" x 4" matted panel.
11. Use the dies to cut out the hiker.
12. Use Paper Snips to remove the lantern from the hiker die cut.
13. Use Liquid Glue to adhere the die cut to the top of the mountain.
14. Use the *Greatest Adventure* die to cut out a hiking pole and use Liquid Glue to adhere it to the panel.

15. Use the dies to cut out two Basic White clouds and use Liquid Glue to adhere them to the panel.
16. Wrap a piece of Coastal Cabana (or Pumpkin Pie) twine from the *Three Twine Combo Pack* twice around the panel and tie a simple knot.
17. On a piece of Highland Heather (or Coastal Cabana) cardstock, stamp the *Greatest Journey* sentiment in Versamark ink.
18. Sprinkle the sentiment with white Embossing Powder and heat set it with the Heat Tool.
19. When the sentiment is cool, use the smallest wider die in the *Stitched Rectangle* die set to cut it out.
20. Use Stampin' Dimensionals to adhere the sentiment over the twine.
21. Use Liquid Glue to adhere the completed card front to the pop up panel.
22. On one of the 2" x 4" pieces of Basic White cardstock, stamp the *Enjoy the Journey* trees in Starry Sky or Garden Green.
23. Use Liquid Glue to mat it and the second 2" x 4" piece of Basic White cardstock on the 2 1/8" x 4 1/8" pieces of Highland Heather or Coastal Cabana cardstock.
24. Use Liquid Glue to adhere the matted panels to the center two panels on the back of the card base.



25. Stamp the *Greatest Journey* trees in Starry Sky or Garden Green ink on the front of the Basic White Medium Envelope.
26. Lay the 2 1/4" x 6" piece of *Enjoy the Journey DSP* over the flap and rub it lightly to ensure it's stuck down.



27. Use Paper Snips to trim off the excess paper.

28. DONE! ☺

Please click on the links to the right to see and purchase the available item(s) in my Online Store:

Greatest Journey Bundle (English) [160594] - Price: \$52.00 - <http://msb.im/1pPg>

Rectangle Stitched Dies [151820] - Price: \$35.00 - <http://msb.im/1pPh>

Enjoy The Journey 12" X 12" (30.5 X 30.5 Cm) Designer Series Paper [160586] - Price: \$12.00 - <http://msb.im/1pPi>

Starry Sky 8-1/2" X 11" Cardstock [159263] - Price: \$9.25 - <http://msb.im/1pPj>

Highland Heather 8-1/2" X 11" Cardstock [146986] - Price: \$9.25 - <http://msb.im/1pPk>

Basic Black 8-1/2" X 11" Cardstock [121045] - Price: \$9.25 - <http://msb.im/1pPl>

Coastal Cabana 8-1/2" X 11" Cardstock [131297] - Price: \$9.25 - <http://msb.im/1pPm>

Basic White 8-1/2" X 11" Cardstock [159276] - Price: \$10.25 - <http://msb.im/1pPn>

Starry Sky Classic Stampin' Pad [159212] - Price: \$8.00 - <http://msb.im/1pPo>

Garden Green Classic Stampin' Pad [147089] - Price: \$8.00 - <http://msb.im/1pPp>

Versamark Pad [102283] - Price: \$9.50 - <http://msb.im/1pPq>

Basics Embossing Powders [155554] - Price: \$18.00 - <http://msb.im/1pPr>

Three Twine Combo Pack [160597] - Price: \$7.50 - <http://msb.im/1pPs>

Basic White Medium Envelopes [159236] - Price: \$7.50 - <http://msb.im/1pPt>

Multipurpose Liquid Glue [110755] - Price: \$4.00 - <http://msb.im/1pPu>

Simply Scored Scoring Tool [122334] - Price: \$30.00 - <http://msb.im/1pPv>