

Sentimental Park Cards & Folio Gift Set



Link to the Original Project Blog Post:

<https://wp.me/p5snyt-rbW>

Link to Video on how to make this card:

https://youtu.be/6Qq_crpf8Jc

Card Stock Cuts for this Project:

Folio:

Dandy Designs DSP: 8 1/4" x 11 1/2"

(envelope/box folio - scored, cut and folded as explained above)

Petal Pink Cardstock: Sentimental Park flowered die cut label "mat"

Basic White Cardstock: Sentimental Park die cut sentiment and flowers

Calypso Coral and Mango Melody Cardstock: Sentimental Park die cut flowers

Note Cards - for each card:

Basic White Cardstock: 5 1/2" x 8 1/2" (card base, scored and folded at 4 1/4"); 3 7/8" x 5 1/8" (inner liner)

Calypso Coral Cardstock: 4" x 5 1/4" (x2 - mats for card front and for inner liner)

Petal Pink Cardstock: Sentimental Park flowered die cut label "mat"

Basic White Cardstock: Sentimental Park die cut sentiment and flowers

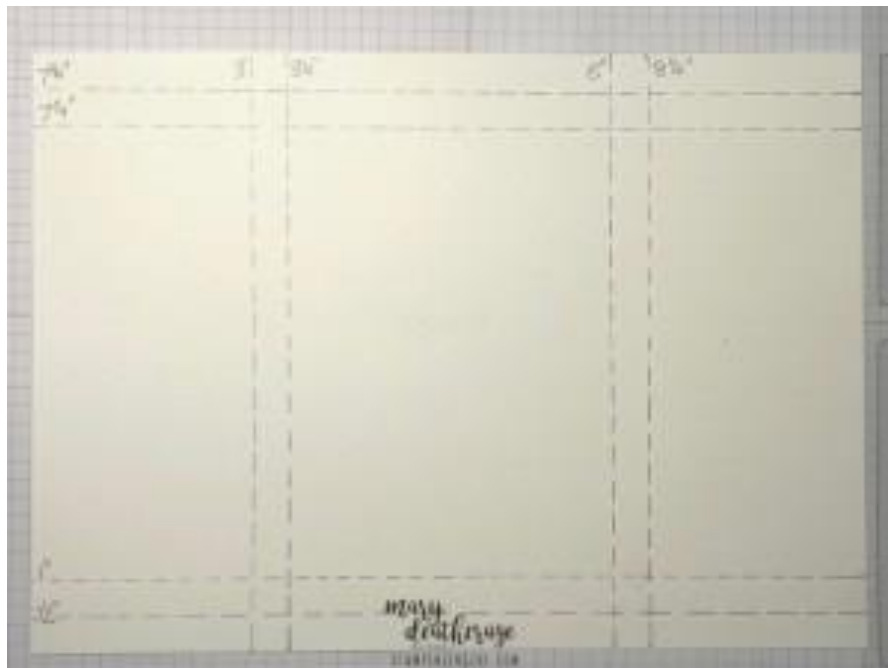
Calypso Coral and Mango Melody Cardstock: Sentimental Park die cut flowers

Dandy Designs DSP: 3 7/8" x 5 1/8" (card front); 2 1/4" x 6" (envelope flap)

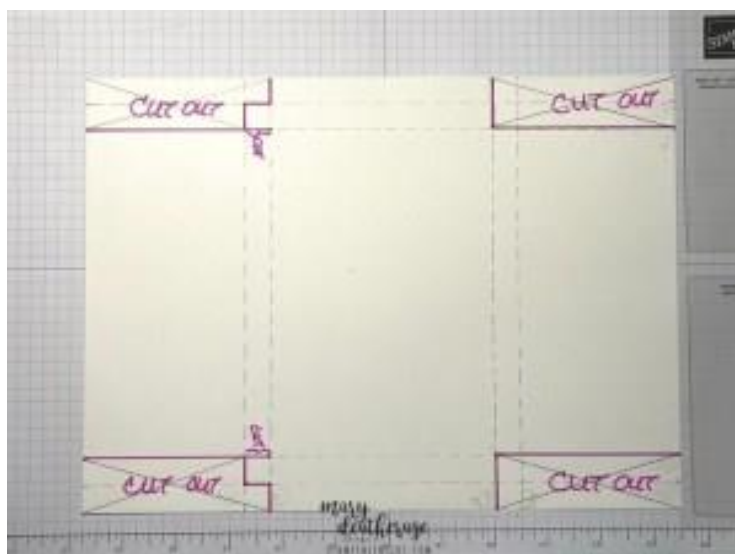
Instructions for this Project:

For the Folio:

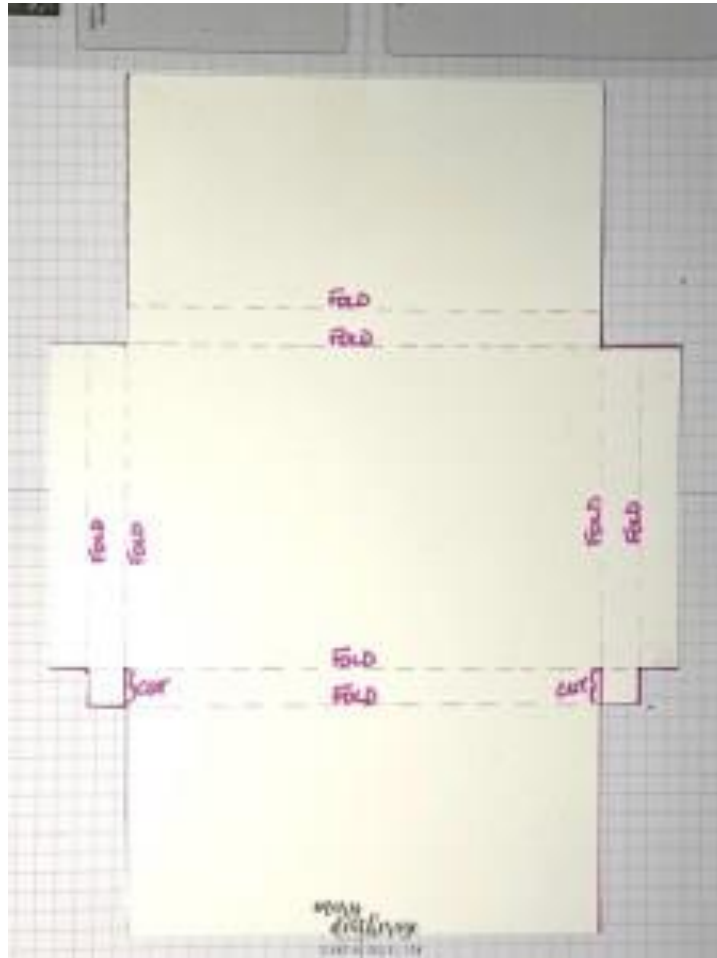
1. Score the $8 \frac{1}{4}" \times 11 \frac{1}{2}"$ piece of *Dandy Designs DSP* as shown.
 - a. Use the *Simply Scored Scoring Tool* to scored across the short side at $\frac{1}{2}"$, $1"$, $7 \frac{1}{4}"$ and $7 \frac{3}{4}"$.
 - b. Rotate the paper 90 degrees and score along the long side at $3"$, $3 \frac{1}{2}"$, $8"$ and $8 \frac{1}{2}"$.



2. Use Paper Snips to cut away the areas as shown. Note the cut to create the small "tab" on the left side....



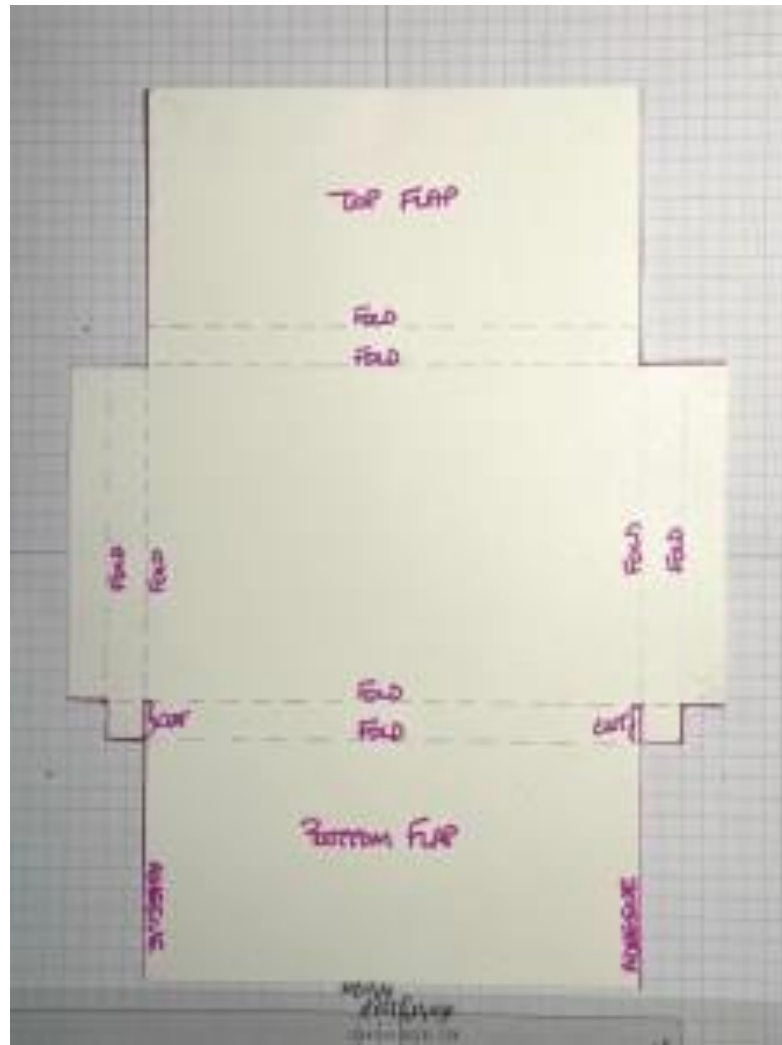
3. Fold and lightly burnish all the remaining score lines in the same direction - AWAY from the side of the DSP that you want showing on the outside.



4. Use two of the Basic Borders Dies to cut the top and bottom flaps.
 - a. Note: the entire piece of DSP will not fit thru the Stampin' Cut and Emboss Machine - it's too wide. So...just roll the flap, with the die in place, thru and then reverse it back out. :)



5. Place **Tear & Tape Adhesive** on the bottom flap and then use it to secure the flap up to the body of the folio.



6. Add small (3/8" circles) clear hook-and-loop closures (you can get them from Amazon - super cheap and super handy!) to the inside of the top flap.
7. Use the **Sentimental Park** dies to cut a Petal Pink label (the large one with the flower borders) and a Basic White plain label.
8. Stamp the **Sentimental Park** sentiments in Calypso Coral and Mango Melody ink.
9. Tuck the label inside the slots in the flower-dy die cut.
10. Use a variety of flower dies in the **Sentimental Park** die set to cut a bunch of flowers in Calypso Coral, Mango Melody and Basic White cardstocks!
11. Using Liquid Glue, mix and match the flowers and adhere them to the sentiment. Note: There's no wrong way to do this!
12. Add an **Iridescent Pearl Basic Jewel** to the middle of the flowers.
13. Use Stampin' Dimensionals to adhere the sentiment onto the front flap of the folio.

For the cards:

14. Use Liquid Glue to adhere the 3 7/8" x 5 1/8" piece of **Dandy Designs DSP** to one of the 4" x 5 1/4" pieces of **Mango Melody** cardstock.
15. Use the **Sentimental Park** dies to cut a Petal Pink label (the large one with the flower borders) and a Basic White plain label.
16. Stamp the **Sentimental Park** sentiment in Calypso Coral ink.
17. Tuck the label inside the slots in the flower-dy die cut.
18. Use a variety of flower dies in the **Sentimental Park** die set to cut a bunch of flowers in Calypso Coral, Mango Melody and Basic White cardstocks!
19. Using Liquid Glue, mix and match the flowers and adhere them to the sentiment.
20. Add an **Iridescent Pearl Basic Jewel** to the middle of the flowers.
21. Use Liquid Glue to adhere the sentiment label to the card front.
22. On the bottom of the 3 7/8" x 5 1/8" piece of Basic White cardstock, stamp the outline flowers image from **Sentimental Park** in Calypso Coral
23. Stamp the second-step fill image in Mango Melody.



24. Use Liquid Glue to adhere the panel to the second 4" x 5 1/4" piece of **Mango Melody** cardstock.
25. Use Liquid Glue to adhere the matted panel to the inside of the Basic White card base.
26. Use Liquid Glue to adhere the card front to the front of the card base.
27. Stamp the **Sentimental Park** flowers on the front of the Basic White Medium Envelope.
28. Add a thin line of Liquid Glue around the edges of the envelope flap.
29. Lay the 2 1/4" x 6" piece of **Dandy Designs DSP** over the flap and rub it lightly to ensure it's stuck down.
30. Use Paper Snips to trim off the excess paper.
31. DONE! ☺

If you'd like to customize your folios - maybe add more cards? - here's a template with the math (don't be scared!).

Step 1: Measure

Determine how tall ("T") and how wide ("W") the center section of the folio needs to be (measure the item you're planning to place inside (don't forget an envelope if using one!).

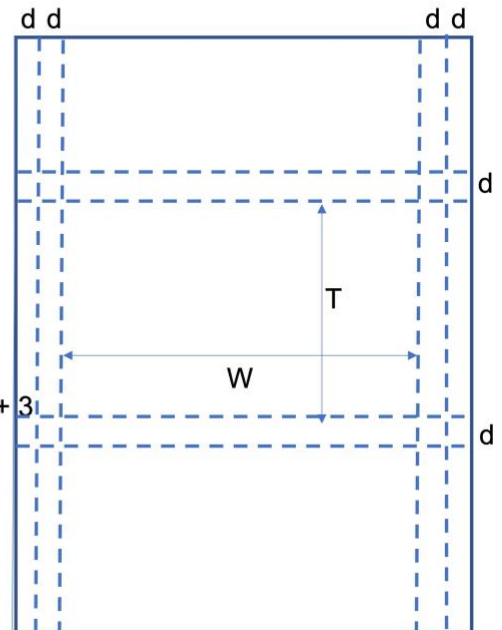
Step 2: Do math!

Paper size (short side x long side) = $d + W + 1$ by $3 + d + T + d + 3$
My Example – depth (d) of $\frac{1}{2}$ " and center section (T) of $4\frac{1}{2}$ " x (W) of $6\frac{1}{4}$ "
Paper Size = $\frac{1}{2} + \frac{1}{2} + 6\frac{1}{4} + \frac{1}{2} + \frac{1}{2}$ by $3 + \frac{1}{2} + 4\frac{1}{2} + \frac{1}{2} + 3 = 8\frac{1}{4}$ " x $11\frac{1}{2}$ "

Step 3: Score – Still needs math....

On Short Side Score at: d, 2d, 2d + W, (2d + W) + d
My Example: $\frac{1}{2}$ ", 1", $7\frac{1}{4}$ " and $7\frac{3}{4}$ "

On Long Side Score at: 3", 3 + d, (3+d) + T, ((3+d) + T) + d, (((3+d) + T) + d) + 3"
My example: 3", $3\frac{1}{2}$ ", 8", $8\frac{1}{2}$ "



Mary Deatherage
www.StampsNLingers.com

Please click on the links to the right to see and purchase the available item(s) in my Online Store:

- Sentimental Park Bundle (English) [160567] - Price: \$52.00 - <http://msb.im/1kqr>
- Basic Borders Dies [155558] - Price: \$29.00 - <http://msb.im/1kqs>
- Dandy Designs 12" X 12" (30.5 X 30.5 Cm) Designer Series Paper [160836] - Price: \$0.00 - <http://msb.im/1kqt>
- Basic White 8-1/2" X 11" Cardstock [159276] - Price: \$10.25 - <http://msb.im/1kqu>
- Mango Melody 8-1/2" X 11" Cardstock [146989] - Price: \$9.25 - <http://msb.im/1kqv>
- Petal Pink 8-1/2" X 11" Cardstock [146985] - Price: \$9.25 - <http://msb.im/1kqw>
- Mango Melody Classic Stampin' Pad [147093] - Price: \$8.00 - <http://msb.im/1kqx>
- Calypso Coral Classic Stampin' Pad [147101] - Price: \$8.00 - <http://msb.im/1kqy>
- Iridescent Pearl Basic Jewels [158987] - Price: \$7.50 - <http://msb.im/1kqz>
- Basic White Medium Envelopes [159236] - Price: \$7.50 - <http://msb.im/1kr0>
- Tear & Tape Adhesive [154031] - Price: \$7.00 - <http://msb.im/1kr1>
- Multipurpose Liquid Glue [110755] - Price: \$4.00 - <http://msb.im/1kr2>
- Stampin' Dimensionals [104430] - Price: \$4.25 - <http://msb.im/1kr3>
- Paper Trimmer [152392] - Price: \$25.00 - <http://msb.im/1kr4>
- Simply Scored Scoring Tool [122334] - Price: \$30.00 - <http://msb.im/1kr5>