

Paradise Palms Rays of Light Card



Link to the Original Project Blog Post:

<https://wp.me/p5snyt-nuM>

Card Stock Cuts for this Project:

Daffodil Delight Cardstock: 5 1/2" x 8 1/2"
(card base, scored and folded at 4 1/4")

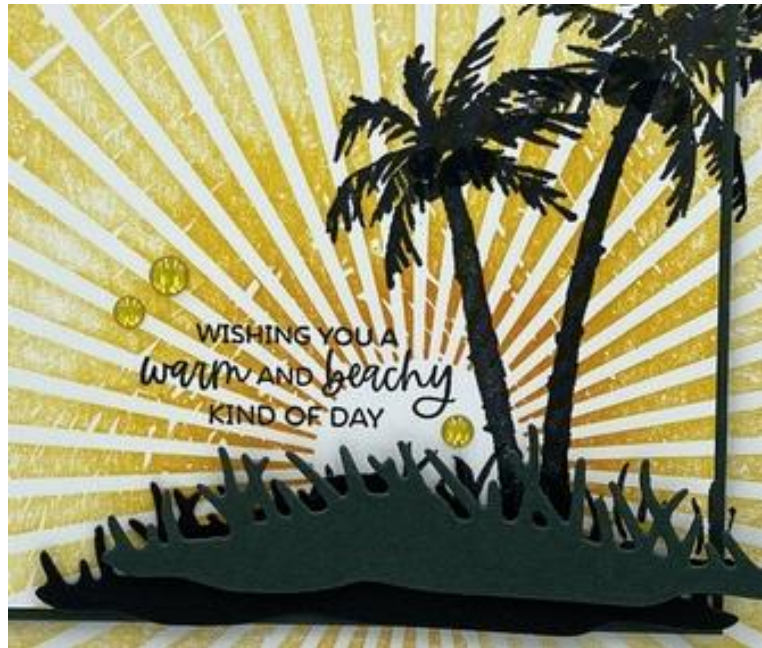
Evening Evergreen Cardstock: 4" x 5 1/4" (x2 -
mats for card front and for inner liner); 3 3/8"
x 4 1/4" (mat for center panel); Palms Die cut
grass

Basic Black Cardstock: Palms Die cut grass

Basic White Cardstock: 3 7/8" x 5 1/8" (x2 -
card front and inner liner); 3 1/4" x 4 1/8"
(center panel)

Instructions for this Project:

1. Use repositionable tape runner to secure one of the 3 7/8" x 5 1/8" pieces of Basic White in the Stamparatus.
2. Use more of the repositionable tape to secure the 3 1/4" x 4 1/8" piece of Basic White in the center of the larger panel.
3. Position the *Rays of Light* stamp in place and pick it up with the acrylic plate.
4. Use Blending Brushes to color the entire image with Daffodil Delight ink and stamp.
5. Repeat a few times until the desired depth of color is achieved.
6. Use Blending Brushes to add Mango Melody and Calypso Coral in the same manner - both near the center of the "sun".



7. Pick up the smaller panel and stamp the image again with Daffodil Delight ink to bridge the gap between the two panels.
8. Replace the small panel in the exact spot it was to start with.
9. Stamp the *Paradise Palms* trees in Tuxedo Black - stamping a few times to make them dark enough.
10. Stamp the "ground" and grasses image near the bottom of the smaller panel.



11. Pick up the small panel and restamp the palm top and ground.



12. Stamp the *Paradise Palms* sentiment in Evening Evergreen on the small panel.
13. Use Liquid Glue to adhere the 3 7/8" x 5 1/8" panel to one of the 4" x 5 1/4" pieces of Evening Evergreen cardstock.
14. Use Liquid Glue to adhere the smaller panel to the 3 3/8" x 4 1/4" piece of Evening Evergreen cardstock.
15. Use Black Stampin' Dimensionals to adhere the small matted panel back into position, aligning the "rays".
16. Use the "grass" die in the *Palms Die* set to cut a Basic Black and an Evening Evergreen "grass" die cut.
17. Use Liquid Glue to adhere the black die cut.
18. Use Black Mini Stampin' Dimensionals to adhere the Evening Evergreen die cut.
19. Add three Daffodil Delight *Glossy Dots*.
20. On the second 3 7/8" x 5 1/8" piece of Basic White cardstock, use the *Rays of Light* set, the *Stamparatus* and the Blending Brush to add Daffodil Delight rays near the outer edge the panel.
21. Stamp a second sentiment in Evening Evergreen.
22. In the corner, stamp the three-palm image in Evening Evergreen.



23. Use Liquid Glue to adhere the panel to the second 4" x 5 1/4" piece of Evening Evergreen cardstock.
24. Use Liquid Glue to adhere the matted panel to the inside of the Daffodil Delight card base.
25. Use Black Stampin' Dimensionals to adhere the card front to the front of the card base.
26. On the front of a Basic White Medium Envelope, stamp the *Paradise Palms* image in Evening Evergreen.
27. Use the Stamparatus to add some of the *Rays of Light* image in Daffodil Delight ink.



28. Stamp the trees and a third sentiment in Evening Evergreen on the envelope flap.
29. Add a little blending with an almost-dry Daffodil Delight Blending Brush.



30. Done! ☺

Please click on the links to the right to see and purchase the available item(s) in my Online Store:

Paradise Palms Bundle [157719] - Price: \$52.00 - <http://msb.im/1Xdx>

Rays Of Light Cling Stamp Set [158925] - Price: \$18.00 - <http://msb.im/1Xdy>

Daffodil Delight 8-1/2" X 11" Cardstock [119683] - Price: \$9.25 - <http://msb.im/1Xdz>

Evening Evergreen 8-1/2" X 11" Cardstock [155574] - Price: \$9.25 - <http://msb.im/1Xe0>

Basic White 8-1/2" X 11" Cardstock [159276] - Price: \$10.25 - <http://msb.im/1Xe1>

Basic Black 8-1/2" X 11" Cardstock [121045] - Price: \$9.25 - <http://msb.im/1Xe2>

Daffodil Delight Classic Stampin' Pad [147094] - Price: \$8.00 - <http://msb.im/1Xe3>

Mango Melody Classic Stampin' Pad [147093] - Price: \$8.00 - <http://msb.im/1Xe4>

Calypso Coral Classic Stampin' Pad [147101] - Price: \$8.00 - <http://msb.im/1Xe5>

Evening Evergreen Classic Stampin' Pad [155576] - Price: \$8.00 - <http://msb.im/1Xe6>

Tuxedo Black Memento Ink Pad [132708] - Price: \$6.00 - <http://msb.im/1Xe7>

Glossy Dots Assortment [158827] - Price: \$8.00 - <http://msb.im/1Xe8>

Basic White Medium Envelopes [159236] - Price: \$7.50 - <http://msb.im/1Xe9>

Multipurpose Liquid Glue [110755] - Price: \$4.00 - <http://msb.im/1XeA>

Black Stampin' Dimensionals Combo Pack [150893] - Price: \$6.00 - <http://msb.im/1XeB>

Stamparatus [146276] - Price: \$49.00 - <http://msb.im/1XeC>

Blending Brushes [153611] - Price: \$12.50 - <http://msb.im/1XeD>